

APXVL08B_43-C-I20

APXVL08B_43-A-I20

Features

- 2 ports / 1 cross pol system in very wide high band (1710-2690 MHz)
- Integrated and field replaceable SRET
- ACU HW version: 2.02
- Optional with Direct Pipe No Tilt mounting hardware (Model name suffix -A-I20)
- Compliant with AISG v2.0 and 3GPP



PRODUCT OVERVIEW	Frequency Range (MHz)	1710-2690
	Array	Y1
	Connector	1-2
		2 PORTS
	Polarization	XPOL
	Azimuth Beamwidth (avg)	65°
	Electrical Downtilt	2-12°
	Dimensions	776 x 160 x 115 mm (30.6 x 6.3 x 4.5 in)

ORDERING OPTIONS

Select from the following ordering options

ANTENNA MODEL NUMBER	CONFIGURATION	MOUNTING HARDWARE	MOUNTING PIPE DIAMETER	SHIPPING WEIGHT	MOUNTING HARDWARE WEIGHT
APXVL08B_43-C-I20	ACU-I20-B1 Internal Field Replaceable RET Included	APM50-B3 Beam Tilt Kit Included	60-110 mm (2.4-4.3 in)	12.4 kg (27.3 lbs)	2.7 kg (5.9 lbs)
APXVL08B_43-A-I20	ACU-I20-B1 Internal Field Replaceable RET Included	APM50-B3N Direct Pipe No Tilt Mounting Kit Included	60-110 mm (2.4-4.3 in)	11.9 kg (26.2 lbs)	2.2 kg (4.8 lbs)

APXVL08B_43-C-I20

APXVL08B_43-A-I20

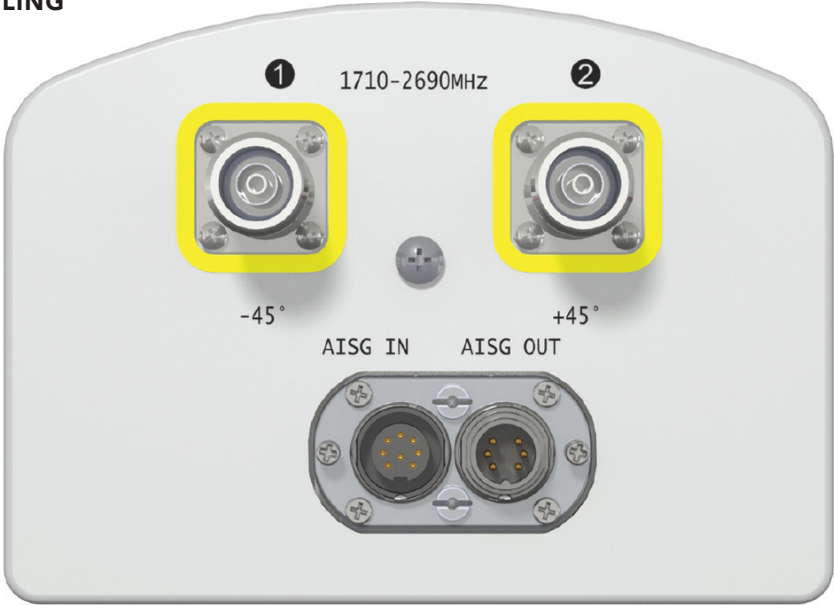
ELECTRICAL SPECIFICATIONS

■ Y1

Frequency Range		MHz	1710-2690				
		MHz	1710-1880	1850-1990	1920-2170	2300-2400	2490-2690
Polarization		---	±45°				
Gain	Over all Tilts	dBi	14.2 ± 0.5	14.6 ± 0.3	14.6 ± 0.3	14.9 ± 0.2	14.8 ± 0.9
	Max Gain	dBi	14.7	14.9	14.9	15.1	15.7
Azimuth Beamwidth (3 dB)		degrees	73.2° ± 2.2°	70.8° ± 1.5°	68.8° ± 2.8°	65.1° ± 2.1°	62.8° ± 7.5°
Elevation Beamwidth (3 dB)		degrees	14.5° ± 1.0°	13.8° ± 0.6°	13.2° ± 0.8°	11.5° ± 0.6°	10.7° ± 0.6°
Electrical Downtilt		degrees	2-12°				
Impedance		Ohms	50Ω				
VSWR (Return Loss)		---	1.5:1 (-14 dB)				
Passive Intermodulation		dBc	-150 (3rd Order for 2x20 W Carriers)				
Front-to-Back Ratio, Total Power, ± 30°		dB	22.4	22.6	22.8	22.8	20.5
First Upper Side Lobe		dB	16.8	17.0	17.9	18.2	15.7
Cross-Pol Over Sector		dB	15.5	12.4	10.7	8.6	7.5
Cross Polar Discrimination (XPD) at Mechanical Boresight (0°)		dB	23.8	23.5	22.8	20.7	17.8
Maximum Effective Power Per Port		Watts	250 W				
Cross Polar Isolation		dB	26				

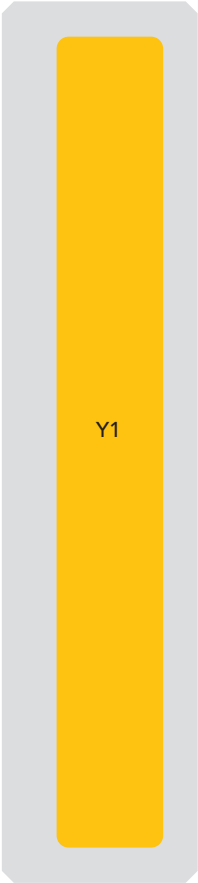
APXVL08B_43-C-I20
 APXVL08B_43-A-I20

BOTTOM VIEW - LABELING



ARRAY LAYOUT

ARRAY	FREQUENCY	CONNECTOR	CONNECTOR TYPE	RET	AISG RET UID
<div>■</div> Y1	1710-2690 MHz	1-2	(2x) 4.3-10 Female	Y1	RFxxxxxxxxxx-Y1



The illustration is not shown to scale.

APXVL08B_43-C-I20

APXVL08B_43-A-I20

MECHANICAL SPECIFICATIONS

Length		mm (in)	776 (30.6)
Width		mm (in)	160 (6.3)
Depth		mm (in)	115 (4.5)
Net Weight - Antenna Only		kg (lbs)	5.1 (11.2)
Wind Load Rated at 150 km/h (93 mph)	Front	N (lbf)	150 (34)
	Side	N (lbf)	180 (40)
	Rear	N (lbf)	98 (22)
Survival Wind Speed / Rated Wind Speed		km/h (mph)	200 (150)
Connector Type		--	(2x) 4.3-10 Female, (2x) AISG Connectors (1 Male, 1 Female) at Bottom
Radome Color		---	Light Grey RAL7035
Radome Material		---	Fiberglass
Lightning Protection		---	Direct Ground
Shipping	Packing Size (Length x Width x Depth)	mm (in)	1015 x 285 x 240 (40.0 x 11.2 x 9.4)

ENVIRONMENTAL SPECIFICATIONS

Environmental Standard	---	ETS 300 019
Operating Temperature	degrees	-40° to +60° C (-40° to +140° F)
Product Environmental Compliance	---	Product is RoHS Compliant

APXVL08B_43-C-I20

APXVL08B_43-A-I20

ACCESSORIES

Accessories may be ordered separately unless otherwise indicated.

ITEM	MODEL NUMBER	WEIGHT
Beam Tilt Mounting Bracket Kit for Pole Diameter 60-110 mm (2.3-4.3 in) <i>Refer to ordering options</i>	APM50-B3	2.7 kg (5.9 lbs)
Direct Pipe No Tilt Bracket Kit for Pole Diameter 60-110 mm (2.3-4.3 in) <i>Refer to ordering options</i>	APM50-B3N	2.2 kg (4.8 lbs)

INSTALLATION

Please read all installation notes before installing product.

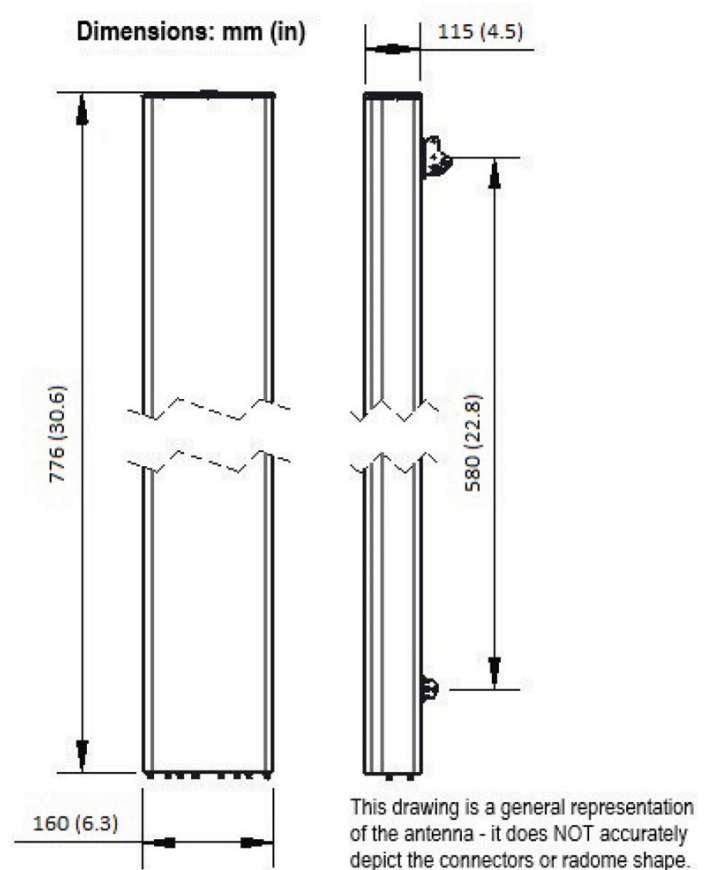


Always attach the antenna using all mounting points.

Do not install antenna with the connectors facing upwards.

EXTERNAL DOCUMENT LINKS

[APM50 Mounting Kit Series Installation Instructions](#)



NOTES

Specifications follow BASTA guidelines.

For additional mounting information, please check **External Document Links**.

For Radiating Patterns: [Request pattern files](#)